

# Datasheet

## Pendent Automatic Low Pressure Water Mist Nozzle

Model: OH-L2

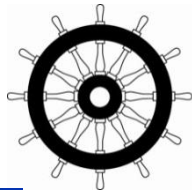


### Description

The VID Fire-Kill Low Pressure Water Mist Nozzle Model OH-L2 is a patented automatic, semi-concealed low pressure water mist nozzle. Ideal for installations such as fire protection of hotel rooms, offices, restaurants, institutions and other similar locations with smooth ceilings and walls, and it provides a highly reliable and enhanced firefighting performance along with low water requirements, which is typical for VID Fire-Kill water mist nozzles. It is available in custom finishes and optional colored finishes, thus making the OH-L2 blend in with almost every type of surface.

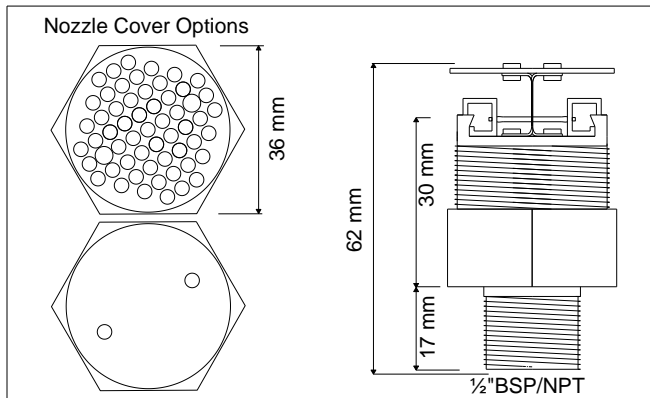
### Approvals

The OH-L2 has been tested in accordance with IMO Resolution MSC. 265(84) for open public spaces. The OH-L2 can therefore be used for securing hotel rooms, offices, homes and other similar areas. The Nozzle is MED approved by Lloyd's Register and Type approved by DNV.



### Installation

The OH-L2 nozzles are installed recessed in a ceiling, using the OH-S36 nozzle spanner, as not



General Stats	
Minimum water pressure	6 bar
Maximum working pressure	16 bar
K-factor (metric)	14.5 (l/t/√bar)
Nominal release temperatures	57°C, 68°C, 79°C, 93°C, 141°C
Drop size	DN <sub>90</sub> < 250 ± 100µm
Application	
Coverage Area	16 m <sup>2</sup> (4m x 4m)
Distance to wall (max)	2 m
Height	Min 2,2m Max 5 m
Specific Stats	
Dimension	See fig. above
Weight	0.211 kg
Housing	Brass
Coating	NiSn
Strainer	Stainless Steel
Thread	1/2" BSP/NPT
Standard Finish	NiSn Chrome White RAL 9001
Optional Finish	Other RAL colors
Cover Options	Solid Penetrated
Hydraulic System	
Water density	2.2 mm/m <sup>2</sup>
Design area and system operation time	As for sprinklers installed in similar hazard groups
Related Products	
Name	Model
Alarm Valve	WAC
OH Rosette	OH-R-T
OH Pipe Spanner	OH-S36

# Datasheet

## Pendent Automatic Low Pressure Water Mist Nozzle

Model: OH-L2



to damage either nozzle or the surrounding ceiling, with a maximum distance of 4 m between nozzles and a maximum of 2 m to any walls needing protection

The OH-L2 should only be installed in clean, non-corrosive pipe systems, which do not cause galvanic corrosion to the nozzle, system components and pipe hangers, and with clean rinsed internal surfaces free of impurities. Water quality should be free of chlorides and impurities. After successful installation of the nozzle, the OH-R-T rosette is screwed on to complete the installation process.

The systems should be in materials acceptable to the authorities having the jurisdiction.

### **Caution**

The OH-L2 is a fragile component, containing glass release elements under pressure. Only VID OH-Spanner should be used in the installation of the OH-L2 nozzle.

Dropped or otherwise damaged nozzles should not be reinstalled.

### **Spray Pattern**

See page 3 for a

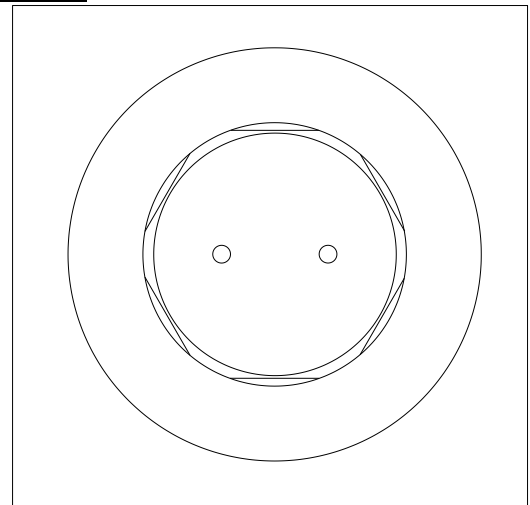


diagram illustrating the spray pattern of OH-L1.

### **Contact**

For further information on the OH-L2 or similar nozzles, please contact your nearest sales office.

Find your nearest sales office at [www.vid.eu](http://www.vid.eu)

**Datasheet**  
**Pendent Automatic Low Pressure Water Mist Nozzle**  
*Model: OH-L2*



**OH-L2 Spray Pattern**

