

Datasheet

Sidewall Automatic Low Pressure Water Mist Nozzle

Model: OH-SW



Description

The VID Fire-Kill Sidewall Automatic Low Pressure Water Mist Nozzle Model OH-SW is a patented automatic, semi-concealed low pressure water mist nozzle; ideal for installations such as fire protection of open public spaces and other similar locations with smooth ceilings and walls. The OH-SW provides a highly reliable and enhanced firefighting performance along with low water requirements, which is typical for VID Fire-Kill water mist nozzles. The nozzle is available in custom finishes and optional colored finishes, thus making the OH-SW blend in with almost every type of surface.

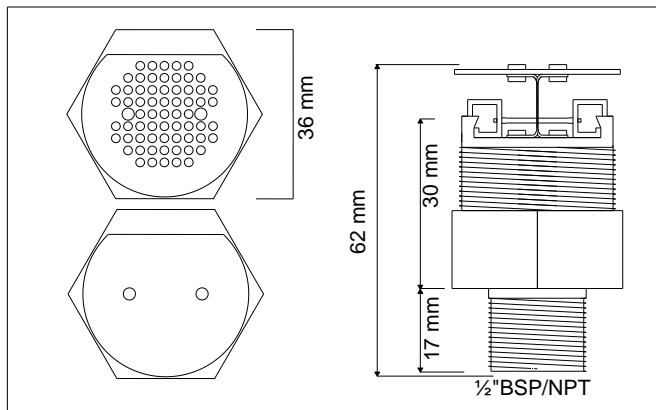
Approvals

The OH-SW has been tested in accordance with Danish Fire Laboratories test method 80728-SW “fire test scenario for horizontally installed sidewall water mist nozzles.”

The OH-SW can therefore be used for securing hotel rooms, offices, homes and other similar areas.

Installation

The OH-SW nozzles are installed recessed in a wall, using the OH-S36 nozzle spanner, as not to damage either nozzle or the surrounding wall, with a maximum distance of 3,7 m between nozzles and a maximum ceiling height of 3 m and should not be placed less than 0.1-0.2 m under the ceiling. After being properly fitted into the wall, the OH-R-T rosette is screwed on to the nozzle to complete the installation. The OH-SW should only be installed in non-corrosive pipe systems, which do not cause galvanic corrosion to the nozzle, system components or pipe hangers, and with clean rinsed internal surfaces free of impurities,



General Stats	
Minimum water pressure	6 bar
Maximum working pressure	16 bar
K-factor (metric)	12.5 (l/t/√bar)
Nominal release temperatures	57°C, 68°C, 79°C, 93°C, 141°C
Drop size	DN ₉₀ < 300 μm
Application	
Spacing	13,7 m ² (3,7m x 3,7m)
Ceiling height	Max 3 m
Specific Stats	
Dimension	See fig. above
Weight	0.211 kg
Housing	Brass
Coating	NiSn
Strainer	Stainless Steel
Thread	½" BSP/NPT
Standard Finish	NiSn Chrome White RAL 9010
Other Finish	Other RAL colors
Cover Options	Solid Penetrated
Hydraulic System	
Water density	2,23 mm/m ²
Design area and system operation time	As for sprinklers installed in similar hazard groups
Related Products	
Name	Model
Alarm Valve	WAC
OH Rosette	OH-R-T
OH Pipe Spanner	OH-S36

Datasheet

Sidewall Automatic Low Pressure Water Mist Nozzle

Model: OH-SW



and of which is accepted by the authorities of which have jurisdiction. The water quality should be free of chlorides and impurities.

Nozzle Position

The nozzles are to be installed in the horizontal position, making them lie perpendicular to the surface of the wall. The OH-SW is to be orientated with the flat of its cover plate facing up, making it parallel with the surface of the ceiling.

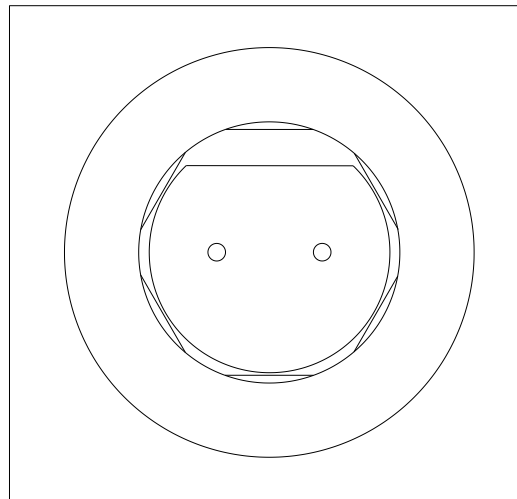
Spray Pattern

See page 3 for diagrams illustrating the spray pattern of the OH-SW.

Caution

The OH-SW is a fragile component, containing a glass release element under pressure. Only VID OH-Spanners should be used in the installation of the OH-SW nozzle.

Dropped or otherwise damaged nozzles should not be installed.



Contact

For further information on the OH-SW or similar nozzles, please contact your nearest sales office. Find your nearest sales office at www.vid.eu

Datasheet
Sidewall Automatic Low Pressure Water Mist Nozzle
Model: OH-SW



OH-SW Spray Pattern

